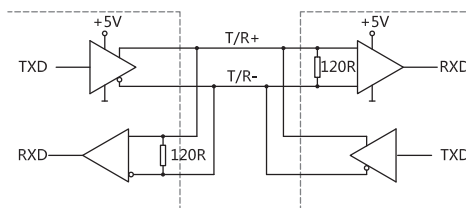


JDCA58 series  
Sensing method Magnetic  
Functional principle Multiturn  
Multiturn technology Mechanical gears without batteries  
Housing size  $\Phi 58\text{mm}$   
Shaft diameter Solid shaft  $\Phi 6\text{mm}$ 、 $\Phi 10\text{mm}$   
Blind hollow shaft  $\Phi 10$ 、 $\Phi 12$ 、 $\Phi 14\text{mm}$   
Max. resolution 25Bit  
Steps per turn 8192/13Bit  
Number of turn 4096/12Bit  
Interface SSI  
Supply voltage DC5V、DC10-30V  
Protection IP65/IP67

## Mechanical characteristics

Shaft diameter	Solid shaft $\Phi 6\text{mm}$ 、 $\Phi 10\text{mm}$ , Blind hollow shaft $\Phi 10$ 、 $\Phi 12$ 、 $\Phi 14\text{mm}$
Material	Aluminum alloy
Shell material	Aluminium alloy
Shaft loading	Max. 40N Axial
Radial load	Max. 80N Axial
Bearing life	$10^9$ turn
Rotational speed	Max. 6000 min
Impact resistance	100g, 6ms
Seismic resistance	10g, 10...2000Hz
Protection grade	IP65/IP67
Working temperature	$-40^{\circ}\text{C} \dots +85^{\circ}\text{C}$
Storage temperature	$-40^{\circ}\text{C} \dots +85^{\circ}\text{C}$
Weight	$\approx 350\text{g}$
Wiring method	Radial direction

## Electrical characteristics



Interface type	Synchronous serial interface
Transmission rate	0.1...1M/bit
Output code system	Gray code or binary
Communicate standard	RS422
Operating voltage	10...30VDC
Non-load current	$\leq 100\text{mA}$
Linearity	$\pm 2\text{LSB}$
Count direction	Settable ( factory default face axis data increase clockwise )
External position	Settable switch on delay $> 100\text{ms}$
Anti-interference	EN61000-6-2
Emission interference	EN61000-6-4
Circuit protection	Surge protection (1KV) 、 reverse power protection 、 ESD protection (8KV)

## Terminal assignment

(→) SSI

Signal		GND	+Ub	CLOCK+	CLOCK-	DATA+	DATA	PRESET	DIR
Color		WH	BN	GN	YE	GY	PK	BK	RD
12-pin M23 Socket CW (9223))		1	2	3	4	5	7	8	6

1) PRESET External position line: Single turn zero position: When a short contact is made with a high level, the current position output is the zero position of the entire data;

Multi-turn midpoint positioning: When a short touch is made with a high level, the current position output is the midpoint position of the whole data;

2) DIR Counting direction line: When the current is low level, the data of the rotating shaft is increased clockwise ( factory default) when the current is high level,the data increase counterclockwise when face the encoder end (pin)

3) The internal is suspended by default

## Ordering information

JDCA58	XX	S	10	B	12	12	OCS1T	10-30	R	1	/	XXXX
	①	②	③	④	⑤	⑥		⑦	⑧	⑨		⑩
① Extended No. XX	② Shaft type B: Blind hollow shaft S: Solid shaft	③ Shaft diameter S: Solid shaft 6: 6mm <b>10: 10mm</b> B: Blind hollow shaft 10: 10mm <b>12: 12mm</b> 14: 14mm	④ Output code <b>B: Binary</b> <b>G: Gray</b>	⑤ Resolution MT <b>12: 4096</b>	⑥ Resolution ST <b>12: 4096</b> 13: 8192	⑦ Supply voltage 10-30: DC 10-30V	⑧ Exit position R: radial direction	⑨ Connection type <b>Figure: Cable length(m)</b> 9223: 12-pin M23 Socket CW	⑩ Special code XXXX	Note: Printed in bold=standard items		

Notes: 1, Turns and steps are commonly used data, turns ≤12bit, steps per turn ≤13bit, other datas should be depends.

2, Please choose the ordering information: model series、shaft diameter、output code、multiturn resolution、singleturn resolution、exit position and cable length.

3, If other electrical parameter is required, please fill in the instructions

Ordering example: JDCA58S10B1212OCS1T10-30R1 Counting direction of the factory is set to clockwise increasing

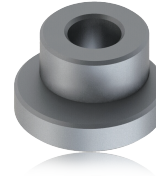
Explanation: JDCA58 series, solid shaft 10mm, binary code, turns 12 bits (4096 turn) , single turn resolution 12bits (Single turn resolution 4096) , data increase clockwise, Zero setting,

**Accessories (sold separately)** Note: Further stator coupling can be found in the accessories selection table.

Stator coupling, double-winged  
Model (common) : 8138A

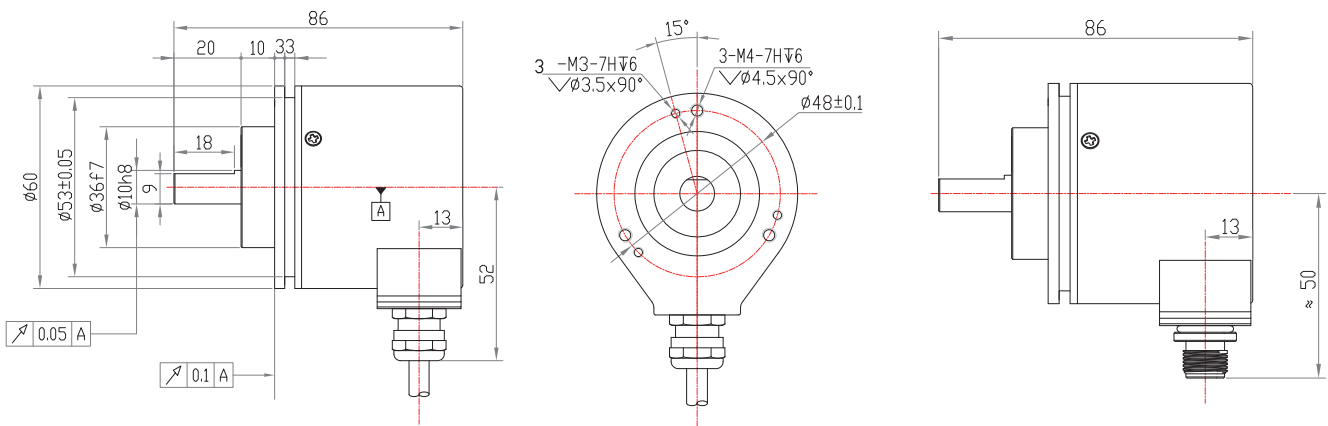
Coupling  
Model (common) : 8215 10-10

Synchro clamping elements (set of 3)  
Model (common) : 8531



**Dimensions**

JDCA58S



JDCA58B

