

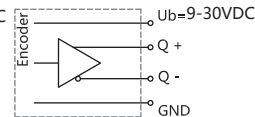
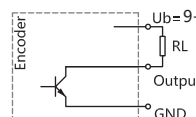
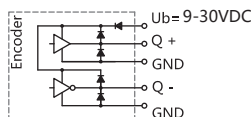
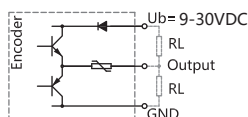


EHK115S series
Sensing method Optical
Housing size $\Phi 115\text{mm}$
Solid shaft $\Phi 10$, $\Phi 11$, $\Phi 12\text{mm}$
Max. resolution 2048PPR
Supply voltage 5VDC, 9-30VDC
Protection IP65/IP67

Mechanical characteristics

Shaft diameter	$\Phi 10$, $\Phi 11$, $\Phi 12\text{mm}$
Protection	IP65/IP67
Speed	6000RPM
Shaft loading	Max. 70 N Axial; max. 140 N Radial
Shock resistance	100g, 3ms
Vibration resistance	10g, 10...2000HZ
Bearing life	10^9 turns
Rotor moment of inertia	$\approx 1.8 \times 10^{-6} \text{kgm}^2$
Starting torque	$< 0.1\text{Nm}$
Materials	Materials Flange :Stainless steel Solid shaft :Aluminium alloy Housing:Aluminium alloy
Working temperature	$-40\text{C} \dots +85\text{C}$
Storage temperature	$-40\text{C} \dots +85\text{C}$
Weight	Approx. 1.2kg (2m cable)

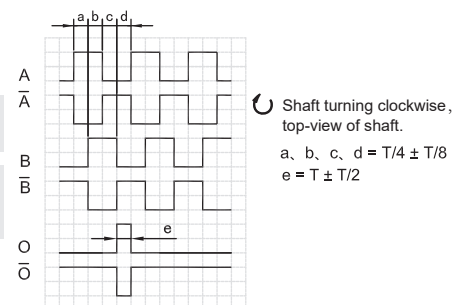
Electrical characteristics



Output circuit	Push-Pull	Push-Pull Differential	Open Collector	RS422 (TTL Compatible)
Pulse rate	Max. 2048P/R	Max. 2048P/R	Max. 2048 P/R	Max. 2048P/R
Supply voltage	5VDC, 9-30VDC	5VDC, 9-30VDC	5VDC, 9-30VDC	5VDC, 9-30VDC
Power consumption(no load)	Max. 125 mA	Max. 125 mA	Max. 80 mA	Max. 80mA
Permissible load/channel	Max. $\pm 80\text{mA}$	Max. $\pm 80\text{mA}$	Max. -50mA	Max. $\pm 50\text{mA}$
Pulse frequency	Max. 100 KHz	Max. 100 KHz	Max. 100 KHz	Max. 100 KHz
Signal level high	Min. $U_b - 2.5\text{V}$	Min. $U_b - 2.5\text{V}$	/	Min. 2.5 V
Signal level low	Max. 0.8V	Max. 0.8V	/	Max. 0.4V
Rise time T_r	Max. 1 μs	Max. 1 μs	/	Max. 1 μs
Fall time T_f	Max. 1 μs	Max. 1 μs	/	Max. 1 μs
Short circuit proof outputs	Yes	Yes	Yes	Yes

Terminal assignment

signal		OV	+Ub	A	\bar{A}	B	\bar{B}	O	\bar{O}	GND
Cable Colour		WH	BN	GN	PK	YE	BU	GY	RD	Shield



Note: Positional relationship of O channel and A&B channels is not specified.

Ordering information

EHK115										XX	S	12	E	1024	A	9-30	R	2	/	XXXX	
										①	②	③	④	⑤	⑥	⑦	⑧	⑨	⑩		
①Extended No. XX		②Shaft type S: solid shaft SK: solid keyway		③shaft diameter 10: 10mm 11: 11mm 12: 12mm		④Channels B: A B C: A B O D: $\bar{A} \bar{A} \bar{B} \bar{B}$ E: A \bar{A} B \bar{B} O \bar{O}		⑤Pulse rate 200,250, 256,300 , 360 ,400,500,512, 600,1000,1024 , 1200,1500, 2000 , 2048		⑥Output circuit F: Push-Pull A: Push-Pull Differential C: Open Collector B: RS422 (TTL Compatible)											
⑦Supply voltage 5: 5VDC 9-30: 9...30VDC		⑧Exit position R: Radial C: Axial		⑨Connection type Figure: Cable length(m)		⑩Special code XXXX															

Note: Printed in bold=standard items

Notes: 1, mentioned resolution is in common use, others depend on real situation.

2, pls confirm the model information: model series, axis dimension, output channel, resolution, output form, voltage, outlet, cable length, connect type and special code.

Ordering example: 1、EHK115S11C1024F9-30R2, pls specify the special demand at end.

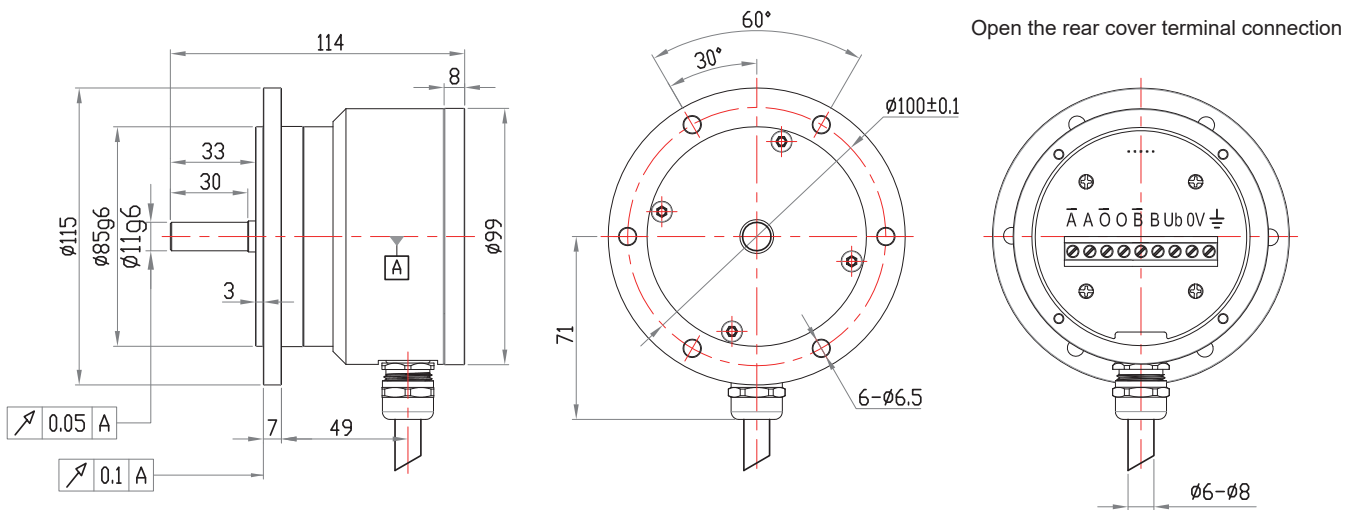
Explanation : EHK115S series, shaft diameter11mm, output A B O, 1024PPR, Push-pull, 9-30VDC, radial direction2m.

2、EHK115SK12E1024A9-30R2, pls specify the special demand at end.

Explanation: EHK115SK series, shaft diameter12mm keyway shaft, output A \bar{A} B \bar{B} O \bar{O} , 1024PPR, Push-pull differential output , 9-30VDC, radial direction2m.

Dimensions

EHK115S11



Dimensions

EHK115SK11

