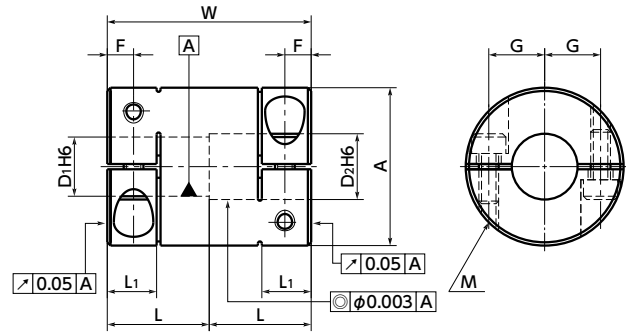


XRP Rigid Coupling - Clamping Type

WEB Selection Tool WEB CAD Download Zero Backlash High Rigidity

XRP-C



Dimensions

Unit : mm

Part Number	A	L	L1	W	F	G	M	Screw Tightening Torque (N·m)
XRP-16C	16	10	5	20	2.6	5	M2	0.5
XRP-19C	19	13	6.5	26	3.5	6.25	M2.5	1
XRP-24C	24	15	7	30	3.75	7.75	M3	1.5
XRP-34C	34	20	8	40	4	12	M3	1.5
XRP-39C	39	24	10	48	5	14.5	M4	2.5

Part Number	Standard Bore Diameter		
	D1	D2	D2
XRP-16C	5 - 5	5 - 6	6 - 6
XRP-19C	6 - 6	6 - 8	8 - 8
XRP-24C	8 - 8	8 - 10	10 - 10
XRP-34C	10 - 10	10 - 12	12 - 12
XRP-39C	12 - 12	12 - 14	15 - 15

- All products are provided with hex socket head cap screws.
- Recommended tolerance of applicable shaft diameter is h6.
- In case of mounting on D-cut shaft, be careful about the position of the D-cut surface of the shaft. → P.258

Performance

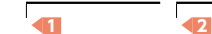
Part Number	Max. Bore Diameter (mm)	Rated torque*1 (N·m)	Max. Rotational Frequency (min ⁻¹)	Moment of Inertia*2 (kg·m ²)	Mass*2 (g)
XRP-16C	6	1	39000	3.1×10 ⁻⁷	9
XRP-19C	8	2.5	33000	8.0×10 ⁻⁷	15
XRP-24C	10	4.5	26000	2.7×10 ⁻⁶	32
XRP-34C	15	7.5	18000	1.4×10 ⁻⁵	87
XRP-39C	18	10	16000	3.9×10 ⁻⁵	140

*1 : Correction of rated torque due to load fluctuation is not required.

*2 : These are values with max. bore diameter.

• Part number specification

XRP-24C-8-10



Additional Keyway at Shaft Hole → P.803 Cleanroom Wash & Packaging → P.807 Change to Stainless Steel Screw → P.805

Please feel free to contact us

Available / Add'l charge

Available / Add'l charge