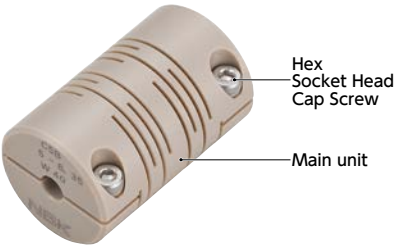


MSXP-C-W-SP Coupling for Vacuum Variable Capacitor NEW

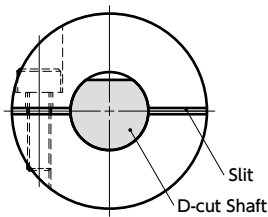
[WEB Selection Tool](#)
[WEB CAD Download](#)
[Zero Backlash](#)
[Electrical Insulation](#)

Structure



⚠ Precautions for Use

- Mounting on D-cut shaft
In principle, use a round shaft.
If a D-cut shaft is used, an excessive load due to tightening by the hex socket head cap screw may damage the coupling, depending on the mounting position of the D-cut surface of the shaft.
When using a D-cut shaft, mount so that the D-cut surface of the shaft avoids contact with the coupling slit as much as possible.



- This is a resin spring coupling with single-piece construction. A slit is inserted into a cylindrical material.
- PEEK superior in physical properties and electrical insulation is adopted.
- A plate spring formed by a slit allows eccentricity, argument, and end-play to be accepted.

● Property

	MSXP-C-W-SP
Zero Backlash	⊙
Allowable Misalignment	○
Electrical Insulation	⊙
Allowable Operating Temperature	−20℃ to 120℃

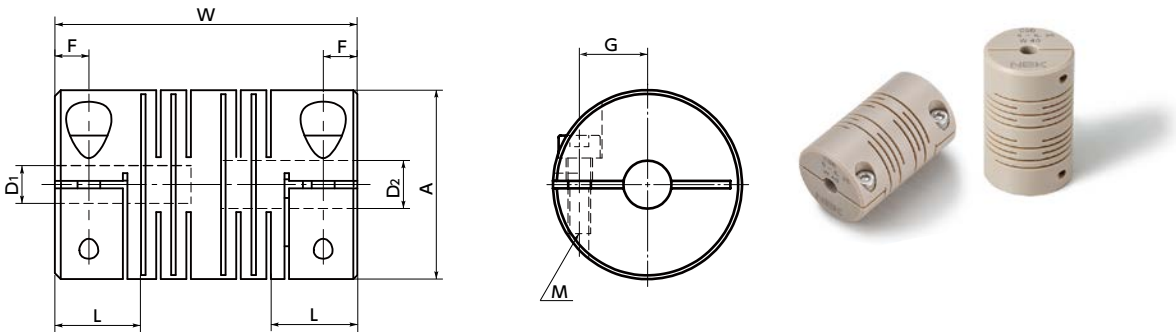
● Application

High frequency power / Matching box

● Material/Finish

RoHS2 Compliant

	MSXP-C-W-SP
Main unit	PEEK (Polyether ether ketone)
Hex Socket Head Cap Screw	SUSXM7



Dimensions

Part Number	A	L	W	F	G	M	D ₁	D ₂	Screw Tightening Torque (N・m)
MSXP-25C-W40-5-6.35-SP3	25	11.4	40	4.5	9	M3	5	6.35	0.6

● All products are provided with hex socket head cap screw. ➡ P.258

Performance

Part Number	Rated torque*1 (N・m)	Max. torque*1 (N・m)	Max. Rotational Frequency (min ⁻¹)	Moment of Inertia(kg・m ²)	Static Torsional Stiffness (N・m/rad)	Max. Lateral Misalignment (mm)	Max. Angular Misalignment(°)	Max. Axial Misalignment (mm)	Mass(g)
MSXP-25C-W40-5-6.35-SP3	1.3	2.6	6000	1.9×10 ^{−6}	50	0.3	1.2	±0.33	23

*1: Correction of rated torque and max. torque due to load fluctuation is not required.

- Part number specification

MSXP-25C-W40-5-6.35-SP3

1

Additional Keyway at Shaft Hole ➡ P.803 Not Available	Cleanroom Wash & Packaging ➡ P.807 Available / Add'l charge	Change to Stainless Steel Screw ➡ P.805 Changed to the S.S. screw
--	--	--