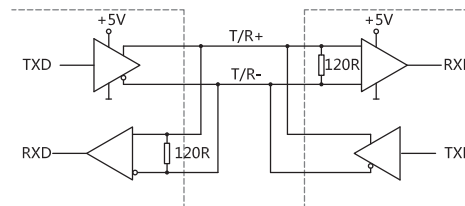


JDCA58 series
 Sensing method Magnetic
 Functional principle Multiturn
 Multiturn technology Mechanical gears without batteries
 Housing size $\Phi 58\text{mm}$
 Shaft diameter Solid shaft $\Phi 6\text{mm}$ 、 $\Phi 10\text{mm}$
 Blind hollow shaft $\Phi 10$ 、 $\Phi 12$ 、 $\Phi 14\text{mm}$
 Max. resolution 25Bit
 Steps per turn 8192/13Bit
 Number of turn 4096/12Bit
 Interface SSI
 Supply voltage DC5V、DC10-30V
 Protection IP65/IP67

Mechanical characteristics

Shaft diameter	Solid shaft $\Phi 6\text{mm}$ 、 $\Phi 10\text{mm}$, Blind hollow shaft $\Phi 10$ 、 $\Phi 12$ 、 $\Phi 14\text{mm}$
Material	Aluminum alloy
Shell material	Aluminium alloy
Shaft loading	Max. 40N Axial
Radial load	Max. 80N Axial
Bearing life	10^9 turn
Rotational speed	Max. 6000 min
Impact resistance	100g, 6ms
Seismic resistance	10g, 10...2000Hz
Protection grade	IP65/IP67
Working temperature	$-40^{\circ}\text{C} \dots +85^{\circ}\text{C}$
Storage temperature	$-40^{\circ}\text{C} \dots +85^{\circ}\text{C}$
Weight	$\approx 350\text{g}$
Wiring method	Radial direction

Electrical characteristics



Interface type	Synchronous serial interface
Transmission rate	0.1...1M/bit
Output code system	Gray code or binary
Communicate standard	RS422
Operating voltage	10...30VDC
Non-load current	$\leq 100\text{mA}$
Linearity	$\pm 2\text{LSB}$
Count direction	Settable (factory default face axis data increase clockwise)
External position	Settable switch on delay $> 100\text{ms}$
Anti-interference	EN61000-6-2
Emission interference	EN61000-6-4
Circuit protection	Surge protection (1KV) 、 reverse power protection 、 ESD protection (8KV)

Terminal assignment

(-) SSI

Signal		GND	+Ub	CLOCK+	CLOCK-	DATA+	DATA	PRESET	DIR
Color		WH	BN	GN	YE	GY	PK	BK	RD
12-pin M23 Socket CW (9223))		1	2	3	4	5	7	8	6

- PRESET External position line: Single turn zero position: When a short contact is made with a high level, the current position output is the zero position of the entire data;
Multi-turn midpoint positioning: When a short touch is made with a high level, the current position output is the midpoint position of the whole data;
- DIR Counting direction line: When the current is low level, the data of the rotating shaft is increased clockwise (factory default) when the current is high level,the data increase counterclockwise when face the encoder end (pin)
- The internal is suspended by default

Ordering information

JDCA58	XX	S	10	B	12	12	OCS1T	10-30	R	1	/	XXXX
	①	②	③	④	⑤	⑥		⑦	⑧	⑨		⑩
① Extended No. XX	② Shaft type B: Blind hollow shaft S: Solid shaft	③ Shaft diameter S: Solid shaft 6: 6mm 10: 10mm B: Blind hollow shaft 10: 10mm 12: 12mm 14: 14mm	④ Output code B: Binary G: Gray	⑤ Resolution MT 12: 4096	⑥ Resolution ST 12: 4096 13: 8192	⑦ Supply voltage 10-30: DC 10-30V	⑧ Exit position R: radial direction	⑨ Connection type Figure: Cable length(m) 9223: 12-pin M23 Socket CW	⑩ Special code XXXX	Note: Printed in bold=standard items		

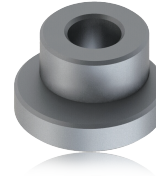
Notes: 1, Turns and steps are commonly used data, turns ≤12bit, steps per turn ≤13bit, other datas should be depends.
2, Please choose the ordering information: model series、shaft diameter、output code、multiturn resolution、singleturn resolution、exit position and cable length.
3, If other electrical parameter is required, please fill in the instructions
Ordering example: JDCA58S10B1212OCS1T10-30R1 Counting direction of the factory is set to clockwise increasing
Explanation: JDCA58 series, solid shaft 10mm, binary code, turns 12 bits (4096 turn) , single turn resolution 12bits (Single turn resolution 4096) , data increase clockwise, Zero setting,

Accessories (sold separately) Note: Further stator coupling can be found in the accessories selection table.

Stator coupling, double-winged
Model (common) : 8138A

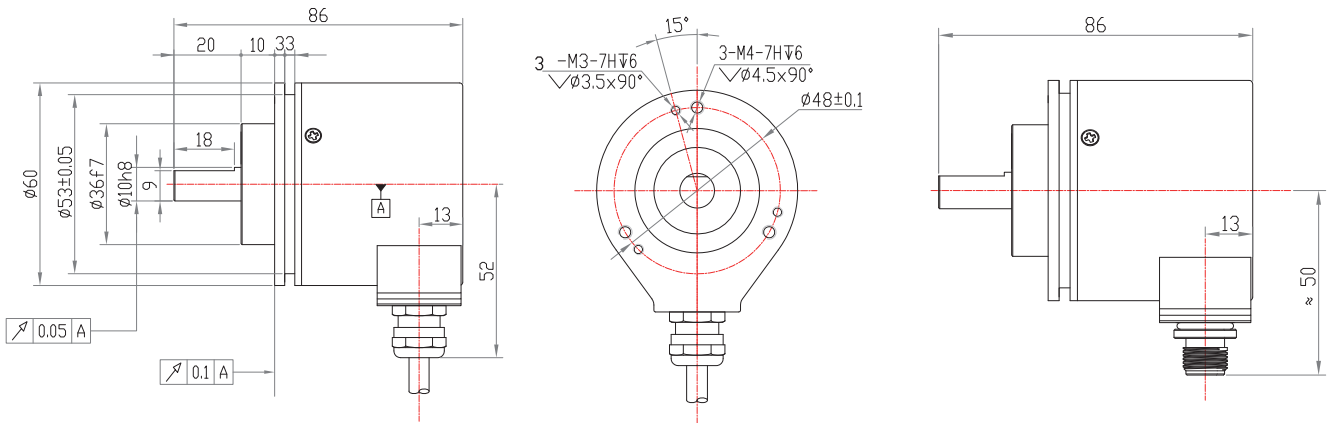
Coupling
Model (common) : 8215 10-10

Synchro clamping elements (set of 3)
Model (common) : 8531



Dimensions

JDCA58S



JDCA58B

