

ROTAPULS • ROTACOD

Flexible couplings

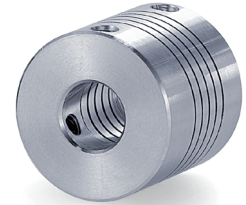
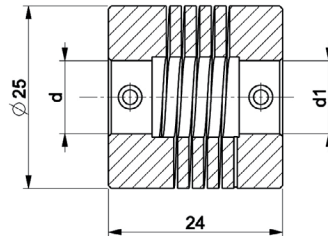
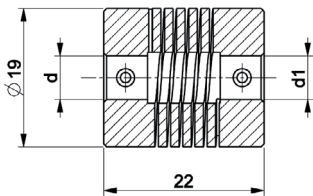
lika

Series

PAN • PGF

CE

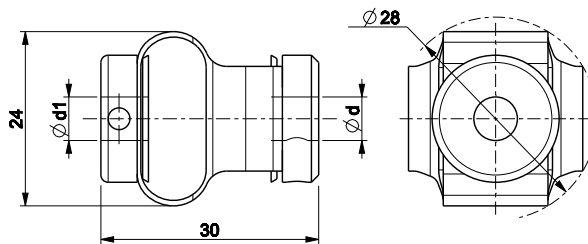
- Flexible coupling for universal usage
- Machined from a single-piece
- Vibration absorbing



PAN

SPECIFICATIONS									
Series	Bore diameter d - d1 mm	Max. torque (Nm)	Max. rotational freq. (rpm)	Moment of inertia (gcm ²)	Static torsional stiffness (Nm/rad)	Max error of eccentricity (mm)	Max error of angularity (°)	Max error of shaft-end-play (mm)	Mass (g)
PAN 6	6 - 6	0,6	8000	6,7	9	±0,25	±3,5	±0,4	13
PAN 8	8 - 8	1	8000	22	20	±0,3	±4	±0,5	26
PAN 10	10 - 10	1	8000	22	20	±0,3	±4	±0,5	26
PAN 12	12 - 12	1	8000	22	20	±0,3	±4	±0,5	26

- Metal hubs & polymer element
- High misalignments allowed
- Electrical shaft insulation



PGF

SPECIFICATIONS									
Series	Bore diameter d - d1 mm	Max. torque (Nm)	Max. rotational freq. (rpm)	Moment of inertia (gcm ²)	Static torsional stiffness (Nm/rad)	Max error of eccentricity (mm)	Max error of angularity (°)	Max error of shaft-end-play (mm)	Mass (g)
PGF 6	6 - 6	0,5	3000	10	3,2	±2,5	±6	±4,5	20
PGF 6-7	6 - 7	0,5	3000	10	3,2	±2,5	±6	±4,5	20
PGF 6-8	6 - 8	0,5	3000	10	3,2	±2,5	±6	±4,5	20
PGF 6-10	6 - 10	0,5	3000	10	3,2	±2,5	±6	±4,5	20
PGF 7-7	7 - 7	0,5	3000	10	3,2	±2,5	±6	±4,5	20
PGF 7-8	7 - 8	0,5	3000	10	3,2	±2,5	±6	±4,5	20
PGF 8	8 - 8	0,5	3000	10	3,2	±2,5	±6	±4,5	20
PGF 8-10	8 - 10	0,5	3000	10	3,2	±2,5	±6	±4,5	20
PGF 9,52-9,52	9,52 - 9,52	0,5	3000	10	3,2	±2,5	±6	±4,5	20
PGF 9,52-10	9,52 - 10	0,5	3000	10	3,2	±2,5	±6	±4,5	20
PGF 10	10 - 10	0,5	3000	10	3,2	±2,5	±6	±4,5	20

Specifications subject to changes without prior notice