

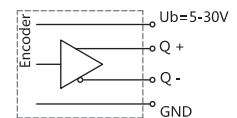
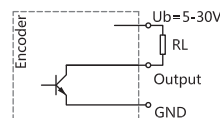
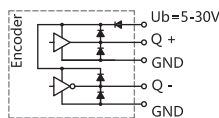
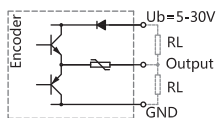


EDG58H Series
Sensing method Optical
Housing size $\Phi 58$ mm
Hollow shaft diameter $\Phi 10$ 、 $\Phi 12$ 、 $\Phi 14$ mm
Max. resolution 5000 PPR
Supply voltage 5VDC, 5-30VDC, 9-26VDC
Protection IP65/IP67

Mechanical characteristics

Shaft diameter	$\Phi 10$ 、 $\Phi 12$ 、 $\Phi 14$ mm
Protection	IP65/IP67
Speed	Max. 6000 min ⁻¹
Shaft loading	Max. 40N _{Axial} ; max. 80N _{Radial}
Shock resistance	100g, 6ms
Vibration resistance	10g, 10...2000HZ
Bearing life	10 ⁹ turns
Rotor moment of inertia	Approx. 1.8×10 ⁻⁶ kgm ²
Starting torque	<0.015 Nm
Materials	Solid shaft : Stainless steel Flange : Aluminum alloy Housing: Aluminum alloy +Electrostatic spraying
Working temperature	-20 C...+70 C
Storage temperature	-40 C...+85 C
Weight	Approx. 400g

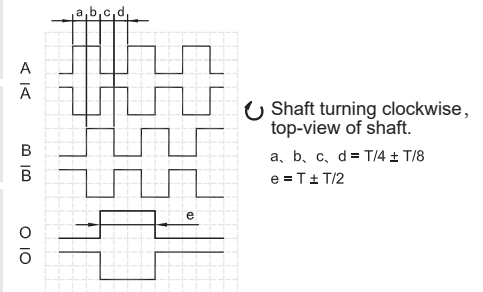
Electrical characteristics



Output circuit	Push-Pull	Push-Pull Differential	Open Collector	RS422 (TTL Compatible)
Pulse rate	Max. 5000 P/R	Max. 5000 P/R	Max. 5000 P/R	Max. 5000 P/R
Supply voltage	5-30V	5-30V	5-30V	5-30V
Power consumption(no load)	Max. 125 mA	Max. 125 mA	Max. 80 mA	Max. 80 mA
Permissible load/channel	Max. ± 80 mA	Max. ± 80 mA	Max. -50 mA	Max. ± 50 mA
Pulse frequency	Max. 300 KHz	Max. 300 KHz	Max. 300 KHz	Max. 300 KHz
Signal level high	Min. Ub-2.5V	Min. Ub-2.5V	/	Min. 2.5V
Signal level low	Max. 0.8V	Max. 0.8V	/	Max. 0.4V
Rise time Tr	Max. 1 μ s	Max. 1 μ s	/	Max. 1 μ s
Fall time Tf	Max. 1 μ s	Max. 1 μ s	/	Max. 1 μ s
Short circuit proof outputs	Yes	Yes	Yes	Yes

Terminal assignment

Signal		OV	+Ub	A	\bar{A}	B	\bar{B}	O	\bar{O}	GND
Cable Colour		WH	BN	GN	PK	YE	BU	GY	RD	Shield
Flange connector M18, 9-pin, CCW		2	7	1	3	4	5	6	8	PH ¹⁾
Flange connector M23, 12-pin, CW (9223)		10	12	5	6	8	1	3	4	PH ¹⁾
Flange connector M23, 12-pin, CCW (9223-2)		10	12	5	6	8	1	3	4	PH ¹⁾



Note: Positional relationship of O channel and A&B channels is not specified.

Note: ¹⁾ PH= connected to housing

Ordering information

EDG58	XX	H	10	E	1024	F	5-30	R	9223	/	XXXX
①	②	③	④	⑤	⑥	⑦	⑧	⑨	⑩		
① Extended No. XX	② Shaft type H: Hollow shaft	③ Shaft diameter 10: 10mm 12: 12mm 14: 14mm	④ Channels B: A B C: A B O D: A \bar{A} B \bar{B} E: A \bar{A} B \bar{B} O \bar{O} F: A B \bar{O}	⑤ Pulse rate 50,100,200, 256,360,500, 512,600,720,1000,1024, 2000,2048,2500,3600, 4096,5000	⑥ Output circuit F: Push-Pull A: Push-Pull Differential C: Open Collector B: RS422 (TTL Compatible)	⑦ Supply voltage 5: 5VDC 5-30: 5...30VDC 9-26: 9...26VDC	⑧ Exit position R: Radial C: Axial	⑨ Connection type Figure: Cable length(m) 9218: M18 connector, 9-pin, CCW 9223: M23 connector, 12-pin, CW 9223-2: M23 connector, 12-pin, CCW	⑩ Special code XXXX		
Note: Printed in bold=standard items											

Notes: 1, Pulse rates available at a short notice (50,100,200,256,360,500,512,600,720,1000,1024, 2000,2048,2500,3600,4096,5000) , other pulse rates on request.

2, Please chose the ordering information: Extended No., Shaft diameter, Channels, Pulse rate, Output circuit, Supply voltage, Exit position, Connection type and Special code.

Ordering example: 1、 EDG58H10C1024F5-30R2

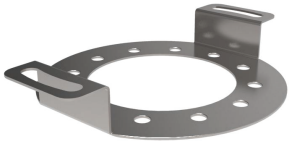
Explanation: EDG58H Series, Shaft diameter 10mm, Output channels A B O, 1024PPR, Push-Pull, DC 5-30V, Radial Output 2m.

2、 EDG5801H12E2000A5-30R9223

Explanation: EDG58H Series, Shaft diameter 12mm, Output channels A \bar{A} B \bar{B} O \bar{O} , 2000PPR, Push-Pull Differential, DC 5-30V, Radial Output , M23 connector, 12-pin, CW.

Accessories (sold separately) Note: Further stator coupling can be found in the accessories selection table.

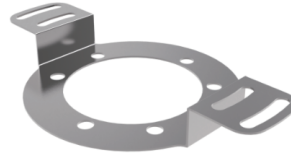
Stator coupling, double-winged
Model (common) : 8133



Stator coupling, double-winged
Model (common) : **8133-D**



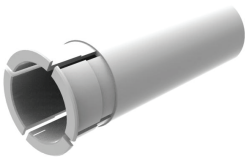
Stator coupling, double-winged
Model (common) : 8138A



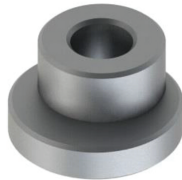
Stator coupling, double-winged
Model (common) : 8127



Isolation insert for hollow shaft
Model (common) : 863X

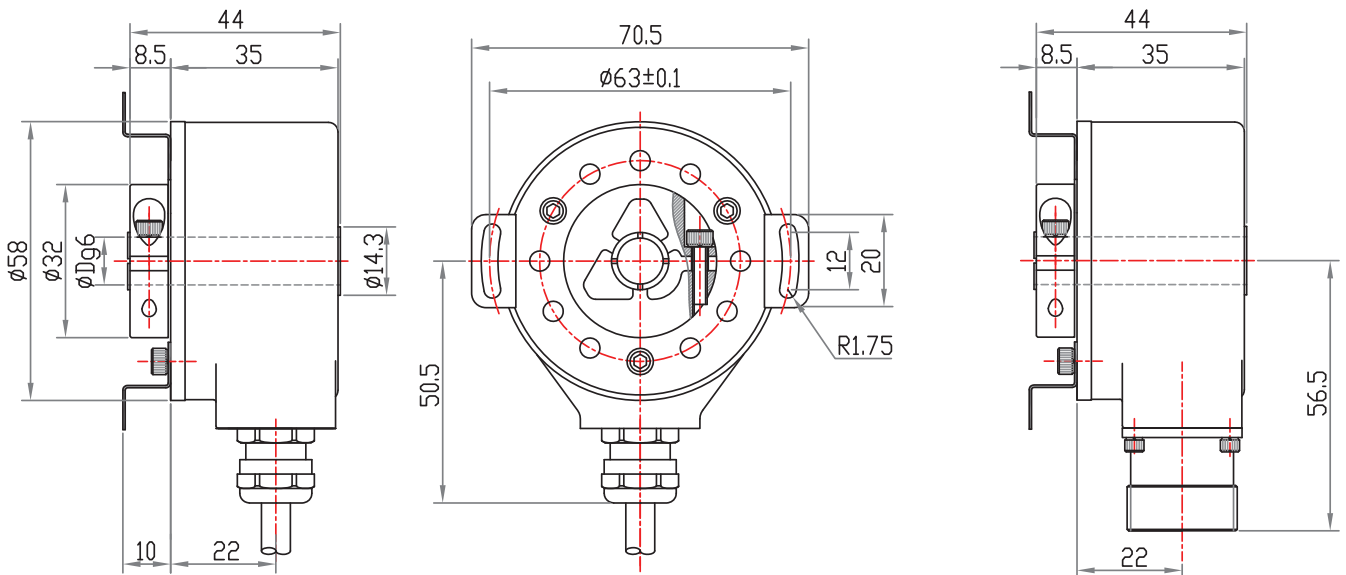


Synchro clamping elements (set of 3)
Model (common) : 8531



Dimensions

EDG58H



Dimensions

EDG5801H

