

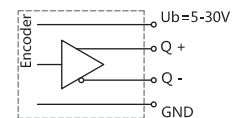
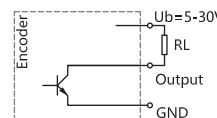
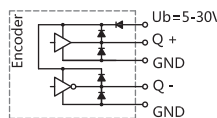
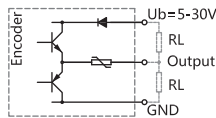


ESG58H Series	
Sensing method	Optical
Housing size	Φ58 mm
Hollow shaft diameter	Φ10、Φ12、Φ14 mm
Max. resolution	5000 PPR
Supply voltage	5VDC, 5-30VDC, 9-26VDC
Protection	IP54/IP65

Mechanical characteristics

Shaft diameter	Φ10、Φ12、Φ14 mm
Protection	IP54/IP65
Speed	max. 6000 min ⁻¹
Shaft loading	max. 40 N Axial ; max. 80 N Radial
Shock resistance	100g, 6ms
Vibration resistance	10g, 10...2000 HZ
Bearing life	109 turns
Rotor moment of inertia	approx. 1.8×10 ⁻⁶ kgm ²
Starting torque	<0.01Nm
Materials	Solid shaft : Stainless steel Flange : Aluminum alloy Housing: Tensile iron shell +Black painted
Working temperature	-20 C...+70 C
Storage temperature	-40 C...+85 C
Weight	Approx. 400g

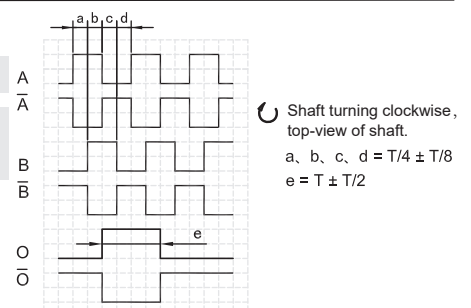
Electrical characteristics



Output circuit	Push-Pull	Push-Pull Differential	Open Collector	RS422 (TTL Compatible)
Pulse rate	max. 5000 P/R	max. 5000 P/R	max. 5000 P/R	max. 5000 P/R
Supply voltage	5-30V	5-30V	5-30V	5-30V
Power consumption(no load)	max. 125 mA	max. 125 mA	max. 80 mA	max. 80 mA
Permissible load/channel	max. ±80 mA	max. ±80 mA	max. -50 mA	max. ±50 mA
Pulse frequency	max. 300 KHz	max. 300 KHz	max. 300 KHz	max. 300 KHz
Signal level high	min. Ub-2.5V	min. Ub-2.5V	/	min. 2.5V
Signal level low	max. 0.8V	max. 0.8V	/	max. 0.4V
Rise time Tr	max. 1μs	max. 1μs	/	max. 1μs
Fall time Tf	max. 1μs	max. 1μs	/	max. 1μs
Short circuit proof outputs	yes	yes	yes	yes

Terminal assignment

Signal		OV	+Ub	A	\bar{A}	B	\bar{B}	O	\bar{O}	⏏
Cable Colour		WH	BN	GN	PK	YE	BU	GY	RD	Shield



Note: Positional relationship of O channel and A&B channels is not specified.

Ordering information

ESG58 XX H 10 E 1024 F 5-30 R 2 / XXXX

①
②
③
④
⑤
⑥
⑦
⑧
⑨
⑩

① Extended No. XX	② Shaft type H: Hollow shaft	③ shaft diameter 10: 10mm 12: 12mm 14: 14mm	④ Channels B: A B C: A B O D: A \bar{A} B \bar{B} E: A A B B \bar{O} O F: A B \bar{O}	⑤ Pulse rate 50,100,200, 256,360,500, 512,600,720, 1000,1024, 2000,2048,2500, 3600,4096,5000	⑥ Output circuit F: Push-Pull A: Push-Pull Differential C: Open Collector B: RS422 (TTL Compatible)
⑦ Supply voltage 5: 5VDC 5-30: 5...30VDC 9-26: 9...26VDC	⑧ Exit position R: Radial C: Axial	⑨ Connection type Figure: Cable length(m)	⑩ Special code XXXX		

Note: Printed in bold=standard items

Notes: 1, Pulse rates available at a short notice (50,100,200,256,360,500,512,600,720,1000,1024, 2000,2048,2500,3600,4096,5000) , other pulse rates on request.

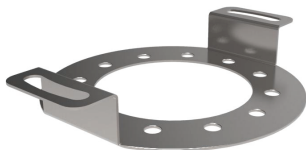
2, Please chose the ordering information: Extended No.、 Shaft diameter、 Channels、 Pulse rate、 Output circuit、 Supply voltage、 Exit position、 Cable length and Special code.

Ordering example: 1、 ESG58H10C1024F5-30R2, Special requirements please indicate to the back.

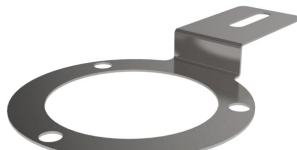
Explanation: ESG58H Series, Shaft diameter 10mm, Output channels A B O, 1024PPR, Push-Pull, DC 5-30V, Radial Output 2m.

Accessories (sold separately) Note: Further stator coupling can be found in the accessories selection table.

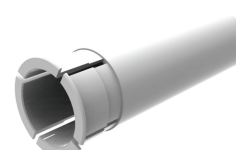
Stator coupling, double-winged
Model (common) : 8133



Fastening arm, long (flexible)
Model (common) : 8127

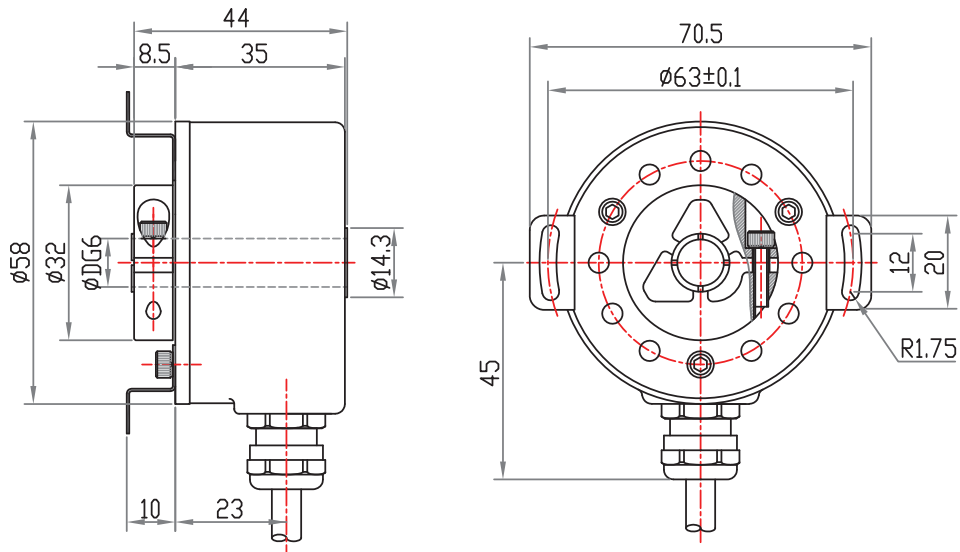


Isolation insert for hollow shaft
Model (common) : 8634



Dimensions

ESG58H



ESG5801H

