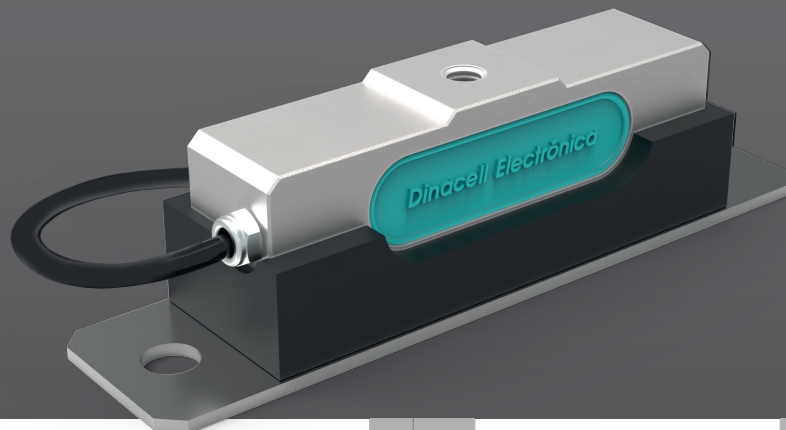


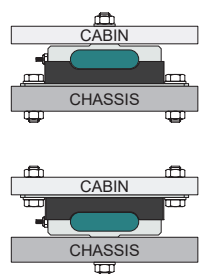
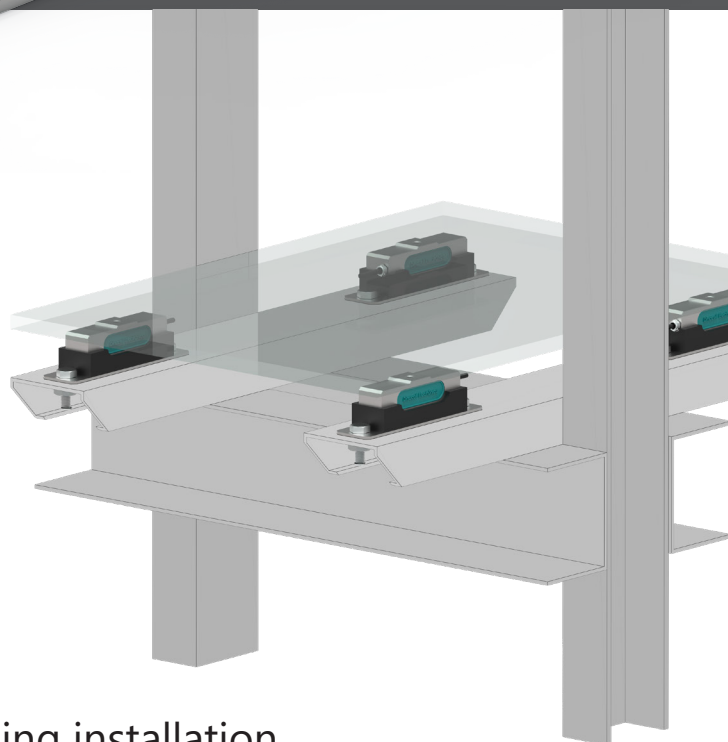
Load sensor designed for under cabin installation



TCA Load compression sensor

High-accuracy load sensor developed for an optimum functioning on lift chassis. Once this sensor is connected to a control unit, adjustment with well-know weight is not necessary. The sensor is mounted over a silent block of different degrees of hardness in order to avoid the possible transmission of vibrations to the cabin.

It is possible to combine active sensors TCA with dummy TCA (inactive sensors) complementing the installation.



For a complete Load weighing installation

TCA sensors are installed under the lift cabin. Usually are installed in set of 2 or 4 sensors. It is possible to buy this kind of sensors as a set, joined through a *CONNECTION BOX*¹ with wired or USB output.

On the other hand, individual TCA has USB output as an option. In this case, sensors should be connected to an *INTERFACE*² with wired or USB output as well, depending on the input of the control unit.



1- CONNECTION BOX.

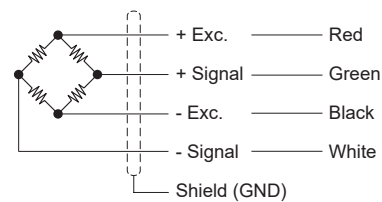
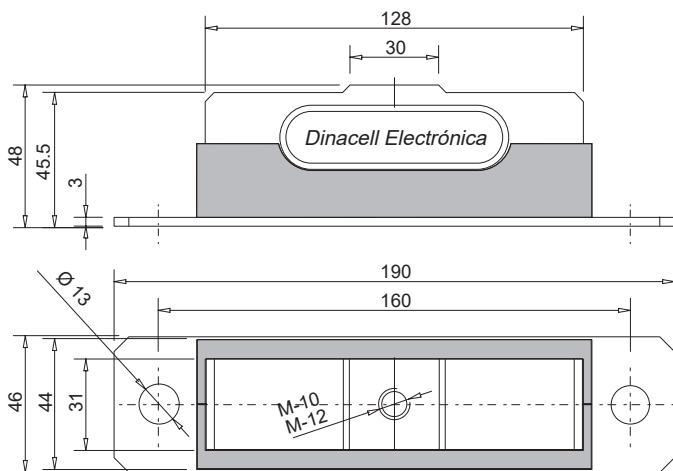


2- INTERFACE.

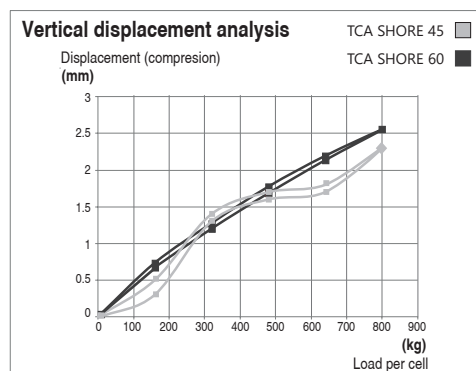
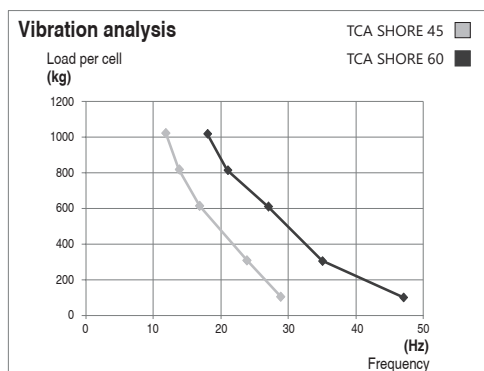
Specifications

Parameter		Units	Specifications	
Model		-	TCA-800	TCA-HM
Nominal Load (N.L.)		kg	800	
Nominal Sensibility (N.S.)		mV/V	2 ± 0,1%	
Accuracy		-	± 0,06%	
Zero balance		mV/V	± 0,020%	
Maximum excitation voltage		V	12	
Temperature range	Compensated	°C (°F)	-10 ... +40 (+14 ... +104)	
	Operating		-20 ... +65 (-4 ... +150)	
	Storage		-20 ... +70 (-4 ... +158)	
Min. insulation resistance (V.Test = 100V)		GΩ	4	
Input resistance		Ω	1050 ± 60	
Output resistance		Ω	1000 ± 5	
Load limit	Working	%N.L.	150	
	Safe		180	
Silentblock hardness		SHORE	60	45
Cable	Type	-	4 x 0.22 mm ² Ø6	
	Connector	-	Wiring connexion / USB	
	Standard length	m	2 / 5	
	Material	-	Polurethane (PU)	
Sensor	Material	-	Aluminum	
	Surface treatment	-	Anodized	
Protection class		-	IP66	

Dimensional Drawings (mm) and Wiring Diagram

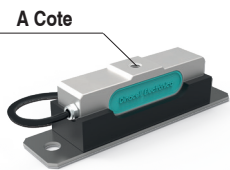


Silentblock characteristic



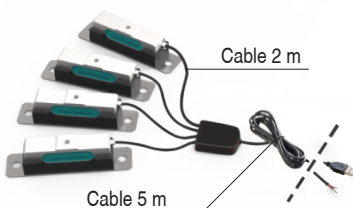
TCA Product Reference

TCA sensor individual



Ref. TCA-800 SHORE 60	Ref. TCA-HM SHORE 45	A Cote	Standard length (m)	Cable connector
-	-	M-10	2	Wiring connexion
008710	019332	M-12		
000665	-	M-10		
000256	019331	M-12	5	USB
007273	-	M-10		
007497	018436	M-12	2	USB
007893	-	M-10		
007974	019330	M-12		

TCA sensor sets + CONNECTION BOX



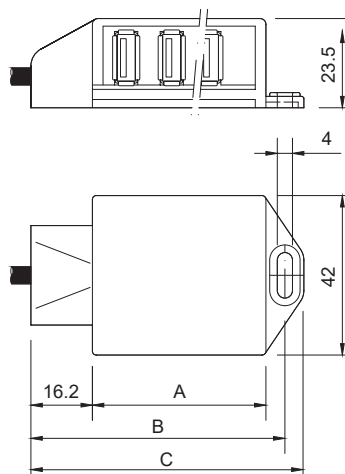
Ref.	Number of TCA	A Cote	CONNECTION BOX Cable	Model
-	2	M-10	Wiring connexion	TCA-800
000666	4			
008754	2			
000257	4			
008645	2	M-10	USB	
007921	4			
007970	2			
007631	4	M-12		

For other dimensions, contact with our commercial department.

Accessories: INTERFACE



Parameter	Units	Specifications			
Model	-	INTERFACE			
Temperature range	°C (°F)	-20 ... +60 (-4 ... +140)			
Material	-	Fire proof ABS			
Protection class	-	IP50			
Cable type	-	4 x 0.22 mm ² Ø4			
Cable lenght	m	5 + Ferrita			
USB port	-	6		12	
Connector	-	USB	Wired	USB	Wired
Ref.		007555	007274	007554	007275



For more information

www.dinacell.com

Dinacell Electrónica S.L.
 Pol. Ind. Santa Ana C/ El Torno N°8
 CP 28522 Rivas Vaciamadrid, Madrid, ESPAÑA
 Tel. (+34) 913 001 435
 Fax. (+34) 913 001 645

Document Ref.: D1072-02
Publication date: 08/01/2020

Certified company



PYMEINNOVADORA

