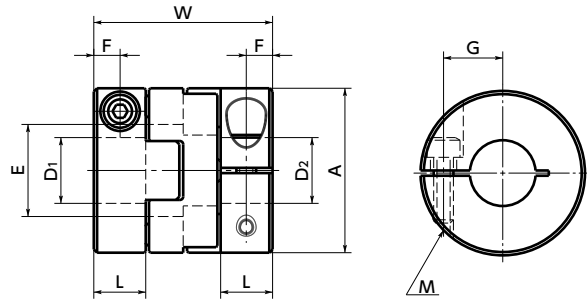


MOP-C Cleanroom / Vacuum / Heat Resistant Coupling - Oldham - Type (PEEK) - Clamping Type

[WEB Selection Tool](#)
[WEB CAD Download](#)
[Cleanroom](#)
[Electrical Insulation](#)
[Heat-resistance](#)
[Chemical-proof](#)
[High Allowable Misalignment](#)

MOP-C



Dimensions

Unit : mm

Part Number	A	L	W	E	F	G	M	Screw Tightening Torque (N·m)
MOP-20C	20	7	22.1	10	3.5	6.5	M2.5	1
MOP-25C	25	8	27.2	14	4	9	M3	1.5
MOP-32C	32	10	33.3	18	5	11	M4	2.5

Part Number	Standard Bore Diameter D1 · D2							
	5	6	8	10	11	12	14	
MOP-20C	●	●	●					
MOP-25C			●	●				
MOP-32C				●	●	●	●	

- All products are provided with hex socket head cap screw.
- Recommended dimensional allowances of applicable shaft diameter are h6 and h7.
- In case of mounting on D-cut shaft, be careful about the position of the D-cut surface of the shaft. → P.258

Performance

Part Number	Max. Bore Diameter (mm)	Rated*1 torque (N·m)	Max.*1 torque (N·m)	Max. Rotational Frequency (min ⁻¹)	Moment*2 of Inertia (kg·m ²)	Static Torsional Stiffness (N·m/rad)	Max. Lateral Misalignment (mm)	Max. Angular Misalignment (°)	Mass*2 (g)
MOP-20C	8	0.7	1.4	31000	7.4×10 ⁻⁷	93	1.3	2	13
MOP-25C	10	1.2	2.4	25000	2.2×10 ⁻⁶	140	1.5	2	24
MOP-32C	14	2.8	5.6	19000	7.3×10 ⁻⁶	350	2	2	48

- *1 : Correction of rated torque and max. torque due to load fluctuation is not required.
- *2 : These are values with max. bore diameter.

- Part number specification

MOP-25C-8-8 (1 set)



MOP-25 - SPCR (Single Spacer)

Product Code	Outside Diameter (A Dimension)	Single Spacer
--------------	--------------------------------	---------------

Additional Keyway at Shaft Hole → P.803 Available / Add'l charge	Cleanroom Wash & Packaging → P.807 Cleanroom washed and packed	Change to Stainless Steel Screw → P.805 Changed to the S.S. screw
---	---	--

Product Code	Outside Diameter (A Dimension)	Single Spacer
--------------	--------------------------------	---------------